

# DWM DLFD 201 EWL freeze condensing unit

## Specifications

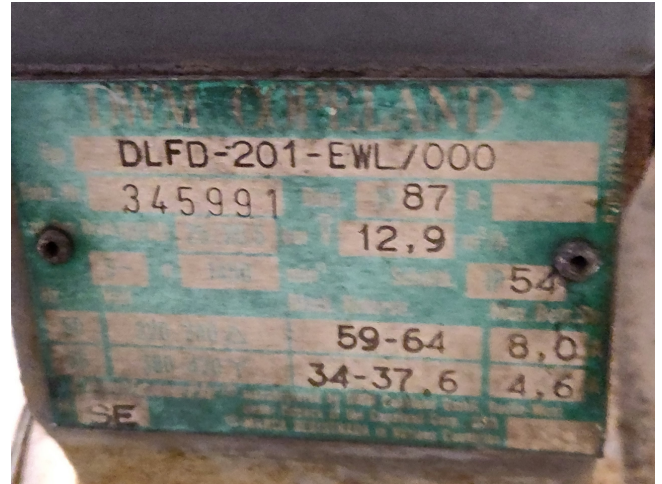
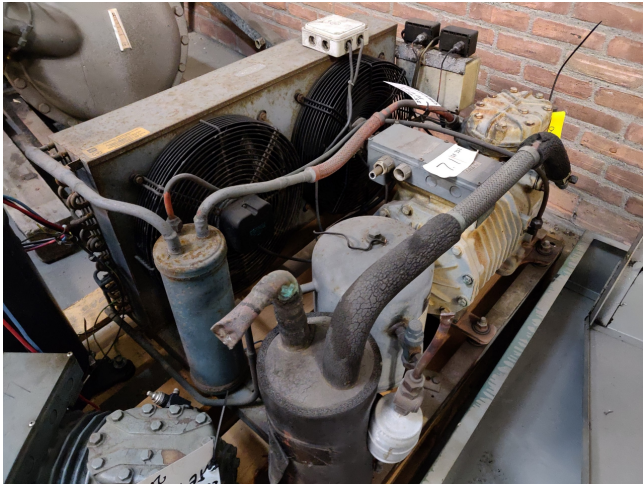
Brand	DWM
Type	DLFD 201 EWL freeze condensing unit
Refrigerant	Freon
kW at -5°C/+40°C	8.28
kW at -10°C/+40°C	6.63
kW at -20°C/+40°C	3.94
kW at -30°C/+40°C	1.99
kW at -40°C/+40°C	0.73
On steel base frame	✓
Pressure safety switches	✓
Hp/Lp/Op	
Oil separator	✓
m3 / h	12.9
Remarks	Our capacity table is based on Manufacturer spec. We would like to know which refrigerant is in your system
Weight in kg.	86
Condensing Unit	✓
Stock	1



## Description

### Used DWM DLFD 201 EWL freeze condensing unit

Used condensing unit, including a DWM - Copeland DLFD 201 EWL semi-hermetic Reciprocating compressor, filter, separator, etcetera. For all the other specs (if available), see the picture of the manufacturer model plate or the attached pdf file. \*Why choose for HOSBV? Were not only the largest used refrigeration specialist in Europe, but also, we deliver all equipment including an extensive test, warranty and industrial cleaning. \*Optional we can also perform a new paint job and arrange the logistics.



#### Cooling capacity [kW]

t <sub>c</sub> \ t <sub>e</sub>	-50	-45	-40	-35	-30	-25	-20	-15	-10	-5
25	0.37	0.75	1.28	1.98	2.85	3.90	5.15	6.59	8.23	10.09
30	0.26	0.60	1.09	1.74	2.55	3.55	4.73	6.11	7.69	9.48
35	-	0.46	0.90	1.50	2.27	3.21	4.33	5.64	7.16	8.88
40	-	-	0.73	1.28	1.99	2.88	3.94	5.19	6.63	8.28
45	-	-	0.58	1.07	1.73	2.55	3.56	4.74	6.12	-
50	-	-	-	0.88	1.48	2.25	3.19	4.30	-	-
55	-	-	-	0.70	1.25	1.95	2.83	-	-	-

#### Power input [kW]

t <sub>c</sub> \ t <sub>e</sub>	-50	-45	-40	-35	-30	-25	-20	-15	-10	-5
25	0.88	1.05	1.23	1.42	1.62	1.80	1.97	2.10	2.21	2.27
30	0.85	1.03	1.23	1.44	1.65	1.87	2.06	2.24	2.38	2.48
35	-	1.00	1.21	1.44	1.68	1.92	2.15	2.36	2.54	2.68
40	-	-	1.19	1.44	1.70	1.96	2.22	2.46	2.68	2.87
45	-	-	1.17	1.43	1.71	2.00	2.28	2.56	2.81	-
50	-	-	-	1.41	1.71	2.02	2.33	2.64	-	-
55	-	-	-	1.39	1.70	2.03	2.37	-	-	-